



2 St. Andrews Avenue, Windsor, Berkshire, SL4 4EJ
Offers in excess of £700,000

 **HORLER**

2 St. Andrews Avenue, Windsor, Berkshire, SL4 4EJ

This well presented four bedroom detached bungalow is ideally situated on one of West Windsor's sought after residential roads within easy access of local shops and amenities. The property offers versatile living accommodation with bedrooms on both floors in addition to an upstairs reception room alongside a family bathroom and a downstairs shower room. The property benefits from a large paved driveway with garage adjacent to the property and a west facing private garden to the rear.



Entrance

Through a wooden front door into:

Hall

With carpeted flooring, power points and stairs rising to the first floor.

Kitchen / breakfast room

A range of eye and base level units, integrated appliances include double oven, induction hob, extractor fan, tiled splash back, inset sink and drainer, rear aspect UPVC double glazed window, radiator, power points, recessed spotlights, dining area and a side access UPVC double glazed window and double glazed doors to rear.

Living room

A front aspect bay style UPVC double glazed window, radiator, wood flooring, electric fireplace with surround and power points.

Ground floor bedroom four

A front aspect UPVC double glazed window, radiators, fitted wardrobes with sliding mirrored doors, wood flooring, power points and ceiling fan.

Ground floor bedroom three

UPVC double glazed rear aspect doors to garden, laminate flooring, radiator, power points and ceiling fan.

Ground floor shower room

A walk-in double shower, his and hers vanity wash hand basin with storage below, bidet, concealed low level W.C, wall mounted storage cupboards and appliance space for a washing machine.

Upstairs sitting room

A side aspect frosted window, radiator and power points.

Upstairs bedroom one

Velux sky light, eaves storage and power points.

Upstairs bedroom two

Dual aspect Velux window, recess spotlights, radiator, eaves storage and power points.

Upstairs bathroom

A fully tiled bathroom with a tile enclosed bath, shower cubicle, concealed low level W.C and his and hers vanity wash hand basin with storage below, heated towel rail, recessed spotlights and a UPVC double glazed frosted window.

Garden

A well established garden with a lawn and mature shrubs, paved patio and raised flower beds. Store room and access to the garage.

Front of property

A paved driveway for multiple vehicles and garage with double doors to the front and rear access to store room and garden.

General information

Council Tax Band: F

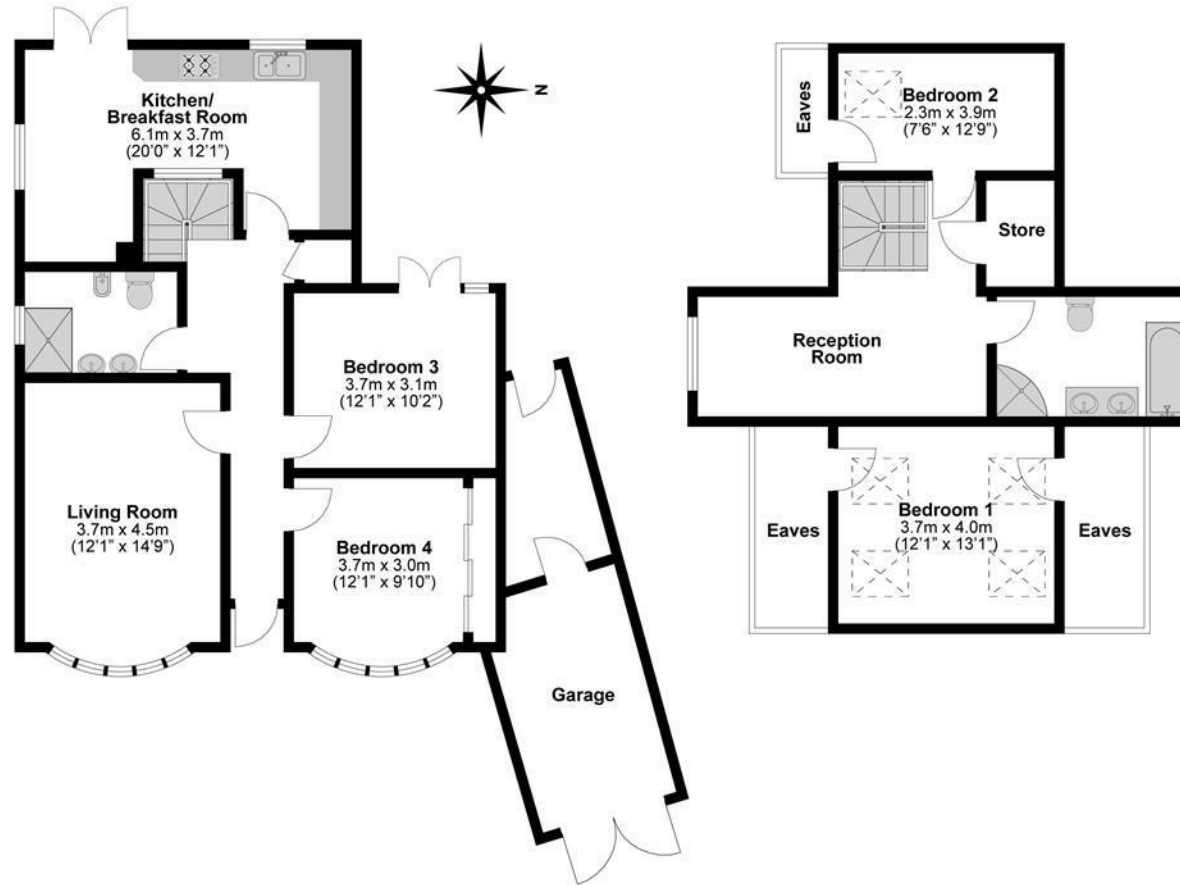
Legal note

Although these particulars are thought to be materially correct, their accuracy cannot be guaranteed and they do not form part of any contract.





Total Approximate Floor Area
1797 Square feet
167 Square metres



**Illustrations are for identification purposes only,
measurements are approximate, not to scale.**